



JAKOBSTAD
PIETARSAARI

VÖRÅ
KOMMUN



VÖYRIN
KUNTA



Hävkraft
från EU
2014–2020



WELCOME TO EARLY CHILDHOOD EDUCATION



As parents, you can safely leave your child at early childhood education centers (also known as "daycares") while you work or study. Educated staff cares for the child in the best way possible. The environment is adapted to children's needs, so that they are able to develop and grow at the right pace.

When the child begins early childhood education

When the child begins early childhood education it is important that the child, along with either one or both parents, visits the day care and has a period of acclimatization to the new environment. During this acclimatization, both the child and parents get to see how the staff works and how the environment is adapted to the needs of the child. Once the child feels safe and at ease, the parents can leave the child alone at the center. Parents are always welcome to ask questions concerning the child, and to get to know the place better. The staff is bound by professional confidentiality.

A good period of acclimatization takes around 5-10 days. Arrange your visits with the staff! The acclimatization period is free of charge.

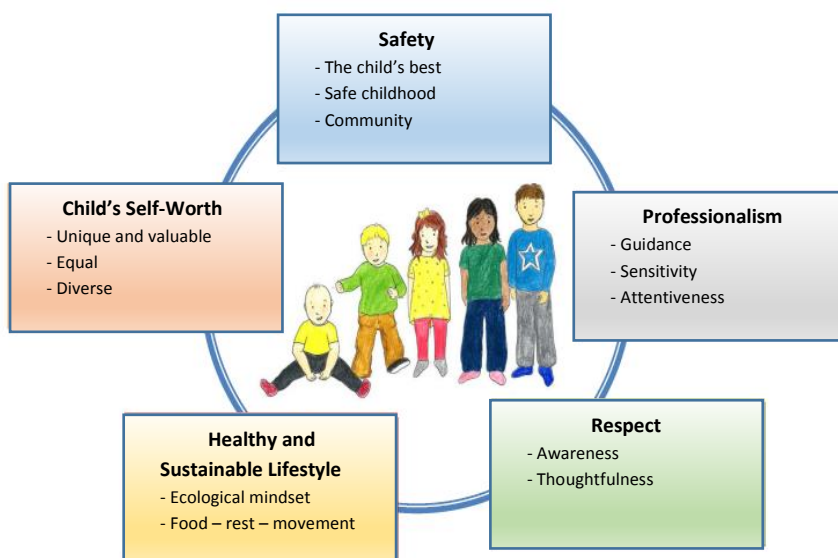


Good advice on dropping off the child at the center

- Always leave the child with a staff member.
- Do not stay long, but leave after you have left the child safely with the staff.
- Say, for instance, "goodbye," "I am leaving now," "see you later" or "take care."
- Do not worry if the child cries a bit, it usually passes quickly.



The values of early childhood education



Children learn through play
Play is important for all children. Play develops mental acuity, imagination, cooperation, and the ability to give and receive instructions.

Motor skills

The child's motor skills are worked with daily. Fine motor skills are practiced when we play, cut with scissors, build, draw, make arts and crafts, and so on. Gross motor skills are practiced through physical activities, such as running, climbing, and digging in sand.

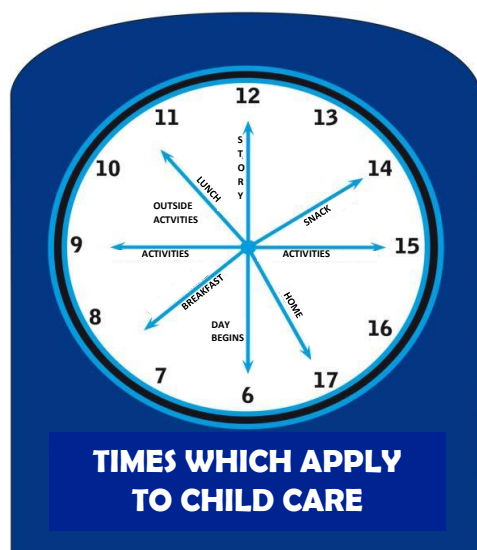
Nature

We spend time out in nature, where the child learns about seasons, plants, and animals. Outdoor experiences strengthen the child's health and fitness, and give space for imagination.

Language training

We practice language with the children in order to develop their vocabulary and ability to express themselves. We read stories and nursery rhymes, as well as play various language games. Talking with the children every day is a way of developing their vocabulary and language comprehension.

Care times



The child's care times are generally dictated by the parents' work schedules. You purchase a certain number of hours per month according to the family's needs. The child's care times are booked via the digital program "Päikky." More information is provided by the center.

The agreed-upon schedule must be followed! Always inform the center if someone other than the parents will pick up the child. Only adults are allowed to drop off and pick up children.

Food and special diets

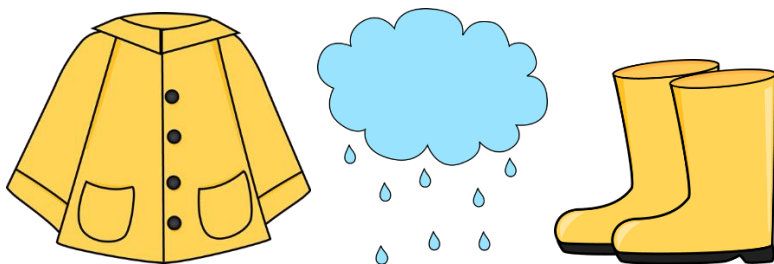
Small children require food during the day in order to have enough energy and to feel well. During the day, breakfast, lunch, and snacks are served at the center. Let us know if your child has any food allergies. A doctor's note regarding food allergies is required!



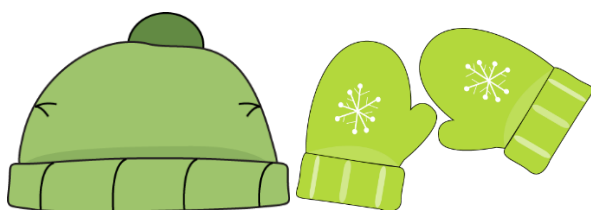
Clothing

We spend time outdoors every day regardless of weather conditions! The child needs both practical clothing and a spare outfit. The child should be dressed warmly, so that he/she is not cold. Fresh air is good for the child and keeps him/her healthy.

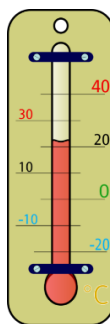
The child needs rainwear and rubber boots for rainy days!



Warm clothes for winter weather; overalls, hats, and gloves!



Mark clothes and shoes with the child's name!



The shoes should be suitable for outdoor use. Both summer shoes and winter boots are needed.



Sick children

Always let the center/staff know when the child is sick. The child must stay at home when it is sick, in part in order to not infect other children and in part due to the child not having the energy to participate in activities.

- If the child has a fever, it must stay at home until it has been fever-free for one day!
- In cases of stomach illness/diarrhea, the child must stay at home for at least 48 hours after the last vomiting or diarrhea.



The fee for early childhood education is based on the parents' gross incomes, as well as family size, in accordance with the Act on Client Fees in Early Childhood Education and Care.

- The fee is invoiced by the municipality monthly.
- If you do not provide information on your income, the highest fee is used automatically.
- Answers to questions regarding this fee are given by the municipality.

Collaborators

If needed, early childhood education cooperates with early childhood special education teachers, staff at child welfare clinics, social services, health care, psychologists, and various therapists. This is done in agreement with a child's guardians.

